

## Dry Ice Blasting Facts

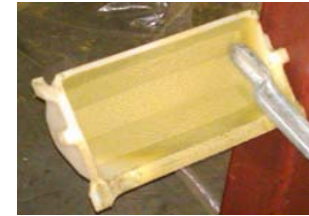
Dry Ice Blasting is a technology that uses a dry ice pellet as the blasting media. The pellet is pushed by compressed air. When it comes into contact with the surface to be cleaned it immediately sublimates (turns from a solid into a gas) and expands up to 700 times its size. The pellet temperature is -109 degrees Fahrenheit which freezes the contaminants that are being removed. The rapid expansion and freezing effect of the dry ice pellet makes it effective at removing contaminants of all types while sanitizing the surface being cleaned and residue free. Unlike traditional blasting and cleaning methods, there are no secondary contaminants to be removed after the object is cleaned.

- **REDUCTION IN WASTE DISPOSAL**
- **CLEAN YOUR EQUIPMENT IN PLACE**
- **FASTER AND MORE THOROUGH CLEANING**
- **ELIMINATES THE NEED FOR SOLVENTS**
- **ELIMINATES EQUIPMENT DAMAGE**
- **KILLS BACTERIA AND SANITIZES WHILE YOU CLEAN**
- **INCREASED EMPLOYEE SAFETY**
- **REDUCTION IN WATER USAGE**
- **ENVIRONMENTALLY FRIENDLY**

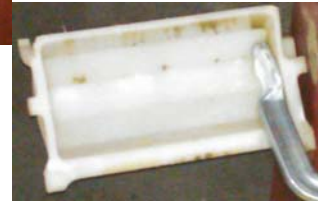
## Dry Ice Blasting Applications

Chances are that your business has an application where dry ice blasting can be beneficial. By reducing the total cleaning time, employee wages and the costly disposal of secondary wastes you can increase your productivity and reduce your downtime. In most cases equipment can be effectively cleaned with minimal disassembly. Here are some applications where dry ice blasting can be used:

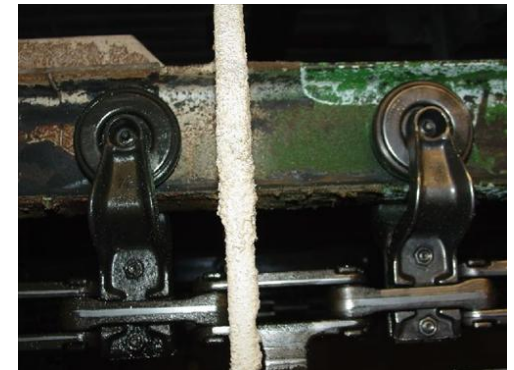
- **Food and Beverage**
- **Packing Lines**
- **Mechanical**
- **Foundry**
- **Printing**
- **Paper/Cardboard**
- **Electrical Instrumentation**
- **Electrical Motors**
- **Packaging**
- **Aviation/Aerospace**
- **General Maintenance**
- **Mold Removal**



HOPP RESIDUE  
BEFORE



AFTER



### PACIFIC CA SYSTEMS

1420 Industrial Way  
Union Gap, Washington 98903

Phone: 800.354.5185

Fax: 509.576.8633

Email: [info@pacificca.com](mailto:info@pacificca.com)